

BEEBUGSOFT

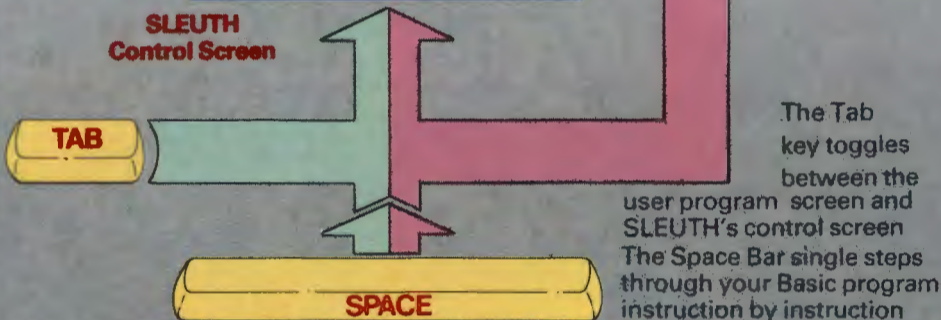
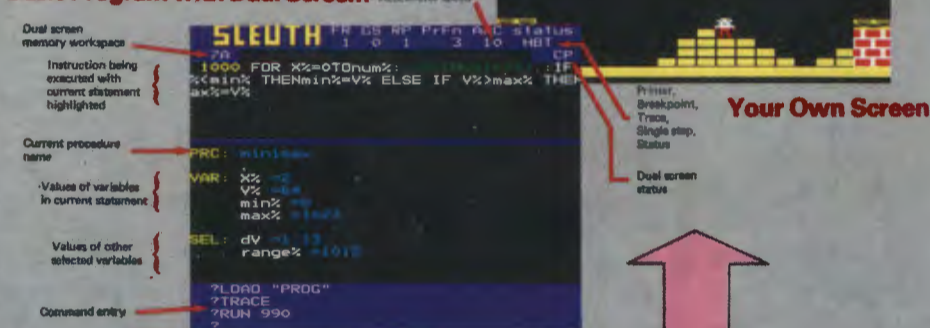
Quality Software
for the
BBC Micro
and Electron



SLEUTH Basic single step debugging tool

Looking for bugs in
your Basic?
Let SLEUTH track
them down.

Single step through your
Basic Program with Dual Screen!



SLEUTH's FEATURES INCLUDE

- * **Single Stepping through Basic** — one statement at a time or a block (e.g. procedure) at a time.
- * **Dual Screen Operation** — flip between your program screen and SLEUTH's control screen.
- * **Breakpoints** — pause your program at any preset line number, or on the state of any variable.
- * **Accelerator** — adjust the speed of your program from full speed to freeze frame.
- * **Full Feature Control Screen** — monitor and update vital aspects of your program as it runs. See opposite.
- * **Trace** — a sophisticated line trace facility operating when program runs.

Here is the ULTIMATE DEBUGGING TOOL for the Basic programmer!

SLEUTH allows you to single step through your Basic program instruction by instruction, watching your screen display as it is built up. Simply press the Space Bar to execute the next instruction.

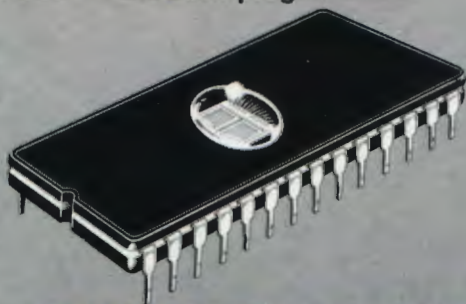
Alternatively you may watch SLEUTH's control screen as you step through your program. (Press Tab to toggle between your own screen and the control screen.) This will show you the next instruction to be executed and allow you to list any part of the program. Also displayed will be the contents of all variables associated with the current instruction and the values of other specified variables.

At any time you may alter the values of any variable or update memory. You can even change the line number of the next instruction to be executed or alter the logic within a program statement. Then simply press the Space Bar to watch the next instruction execute.

Breakpoints may also be set up at any position in your program, these allow you to speed to the problem area and then see exactly what's happening. You may even set conditional breakpoints, e.g. Stop IF A% = 20.

Advanced trace and decelerator facilities are also included. The decelerator allows you to alter the speed at which your program executes; actually as it is running.

SLEUTH is ideal for the novice and expert alike and will prove to be instantly invaluable, saving hours of programming time. In addition, the single stepping facility makes it a powerful teaching aid.



```

SLEUTH FR GS RP PrFn ACC status
          1 0 1 3 10 HBT
7A
80DN ERROR GOTO 240
70DIM S%(19,31),MANS(5,1)
80PROCchar
90REPEAT
100MODE7
105:
110PROCsetupuser
120MODE5
130PROCsetup
140REPEAT
150PROCscreen
160REPEAT
170PROCb1:PROCm:PROCd(2)
180UNTIL end%
190PROCgame
200UNTILdemo%
210UNTILFALSE
220END
?
?LOAD "PROC"
?LIST 60
?
    
```

Control Screen Features

- * Control screen entered at the press of a key.
- * Select edit or single-step mode.
- * Adjust program run speed (1-100%).
- * View the current program line with the current statement highlighted.
- * List the whole or any part of your program.
- * Alter the next line number to be executed.
- * Read and adjust the value of variables in the current statement.
- * Read and adjust the values of any other specified variables or array parameters.
- * Insert or remove breakpoints and conditional breakpoints.
- * Return to the program screen or continue to single-step or to run at any speed.

SPELLCHECK Wordwise/View spelling checker



BBC

UP TO 5 TIMES FASTER

SPELLCHECK provides an automatic spelling check for letters or documents and is the ideal companion to WORDWISE or VIEW.

It is menu driven, easy to use and allows unknown words to be added to the dictionary, ignored or re-spelt. A new corrected copy of the text may then be saved to disc.

SPELLCHECK I (On Disc)

Supplied with a dictionary disc containing 6,000 words, which may be increased to about 17,000 on a 100K disc. Separate versions are available for WORDWISE and VIEW.

SPELLCHECK II (On Rom)

SPELLCHECK II is a completely new machine code program supplied in Rom. Operation speed is up to 5 times faster than SPELLCHECK I and larger pieces of text may be held in memory. The same version will also check both VIEW and WORDWISE.

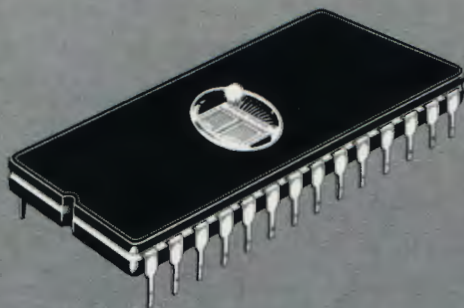
A dictionary disc is still supplied including 6,000 words, but a data compression technique is used to ensure that well in excess of 17,000 words may be stored on a 100K disc.

Ingenious hashing and virtual file access routines have also considerably speeded up the time taken to check text. This sophisticated program is fully 6502 Second Processor compatible and uses the extra memory to further improve word retrieval time.

Upgrade

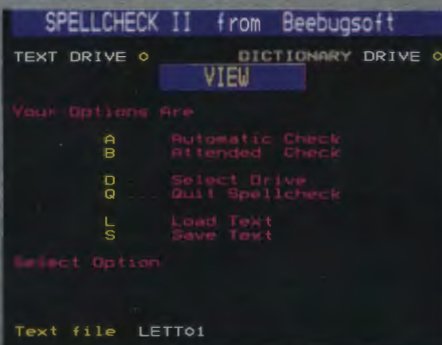
If you wish to trade in your SPELLCHECK I for the Rom version, we will allow a discount of half the disc price towards your new purchase.

NOW IN ROM



"... I found the program to be invaluable ... fast and reliable ... a worthwhile investment."

PCN FEBRUARY 1984



MUROM Sound Extension Rom



BBC

The BBC Micro sound facilities have a lot of potential; MUROM will help you exploit this to the full.

Create your own tunes and sound sequences with ease, either with Murom's editor and a musical score or by using the Beeb to simulate a piano keyboard.

Edit your creations with the full screen music editor. Then switch to the envelope editor to tailor the tonal quality and select instrument type. Alternatively select one of the predefined instrument envelopes.

Incorporate your music and sound sequences into any program of your own, to play back with or without MUROM plugged in. Playback is interrupt driven and may continue even while you run other programs.

Predefined instrument envelopes may be set up, e.g. *FLUTE, *SYNTH etc.

Instant sound effects may be called from Basic, e.g. *ZAP, *SIREN, *EXPLODE etc.

MUROM is accompanied by a full instruction manual and repertoire of music data on cassette.

MUROM CHANNEL EDITOR											
NOTE	CHAN0		CHAN 1		CHAN 2		CHAN 3				
	T	E L	N	O E L	N	O E L	N	O E L	N	O E L	
0008	S	-	C#1	1 0	F#0	5 4	SSS	-	-	-	
0009	S	-	D#1	1 0	Wuuu	-	SSS	-	-	-	
0010	S	-	E 1	1 1	Wuuu	-	SSS	-	-	-	
0011	S	-	Wuuu	-	Wuuu	-	SSS	-	-	-	
0012	S	-	A#1	1 0	Wuuu	-	SSS	-	-	-	
0013	S	-	B 1	1 0	Wuuu	-	SSS	-	-	-	
0014	S	-	D#2	1 0	D#3	5 1	SSS	-	-	-	
0015	S	-	Wuuu	-	Wuuu	-	SSS	-	-	-	
0016	S	-	F 2	1 1	SSS	-	SSS	-	-	-	
0017	S	-	SSS	-	SSS	-	SSS	-	-	-	
0018	S	-	SSS	-	SSS	-	SSS	-	-	-	
0019	S	-	SSS	-	SSS	-	SSS	-	-	-	
0020	S	-	SSS	-	SSS	-	SSS	-	-	-	
0021	S	-	SSS	-	SSS	-	SSS	-	-	-	
0022	S	-	SSS	-	SSS	-	SSS	-	-	-	
0023	S	-	SSS	-	SSS	-	SSS	-	-	-	
0024	S	-	SSS	-	SSS	-	SSS	-	-	-	
0025	S	-	SSS	-	SSS	-	SSS	-	-	-	

COMMAND SUMMARY

- *PLAY Calls the variable speed, interrupt driven playback routine.
- *DISP Mode 7 display of tune playing.
- *TEMPO Alter tempo.
- *KEYB Use BBC keyboard as a piano keyboard.
- *SCORE Call up full screen music editor.

EDITOR SUB-COMMANDS:

- MODE Change from editing a single channel to editing all channels consecutively.
- GO Move editor to any note in score.
- PLAY Enable single stepping of music.
- OCTV Change octave of any channel.
- ENVL Change envelope of any channel.
- LOAD Load previously created music.
- SAVE Save edited score to disc or cassette.
- KEY Toggle note entry between note name and keyboard position.
- *ENVLP Sound envelope editor.
- *FLUTE, *SYNTH . . . etc. ten predefined envelopes.
- *EXPLODE, *ZAP . . . etc. ten predefined effects.
- *TRANS Transpose up or down by a number of semitones.
- *MONOC Disable colour output for monochrome screens.

EXMON II Now with Dual Screens Machine Code Monitor



Now with Dual Screens

Our very popular machine code monitor has been enhanced by the addition of a number of new facilities, including Dual Screen Operation and full screen memory editor. EXMON II now adds 60 powerful commands to the BBC Micro.

Now if you are debugging a game, or any other program with a visual display, you can single step through it instruction by instruction and actually watch the effect on the screen.

You can also revert to the monitor screen at the press of a key to examine registers, edit code, read variables, alter memory etc., and then switch back to your display screen and continue running (or single stepping), without losing your display.

If you are interested in using the BBC assembler as a beginner or an experienced user, or would just like to have facilities like Disassemble, Move Memory, Verify . . . instantly at your fingertips, then EXMON II is about the best you can buy.

Notes

EXMON II uses just over 1K of workspace for screen storage (if you wish to use the dual screen facility). This workspace is relocatable by the user, and may even be located in sideways Ram.

EXMON II is available only on Rom, BBC cassette versions of EXMON I are still available. To make space for the extra routines we have had to sacrifice the on-screen Help option in EXMON I. EXMON II is supplied with a quick reference guide.

EXMON on the Electron

EXMON I is available for the Electron on cassette. The Rom based EXMON II for the Electron does not feature dual screens.



A	X	Y	S	P	flags	PC	stack	12	CF
45	05	0D	01	FE	30	BBC7	AO		
8BC7	84	1B				STY	&1B		
8BC9	20	DD	95			JSR	&20DD		
8BCB	00	1B				BRN	&8BE9		
8BCE	50	90				BCC	&8B60		
8BD0	86	1B				STX	&1B		
8BD2	20	41	98			JSR	&9841		
8BD5	20	FC	94			JSR	&94FC		
8BD8	A2	05				LDR	&05		
8BDA	E4	2C				CPX	&2C		
8BDC	00	01				BRN	&8BDF		
8BDE	EB					INX			
8BDF	20	31	95			JSR	&9531		
8BE2	C6	0A				DEC	&0A		
8BE4	20	82	95			JSR	&9582		
45	00	01	FF	30	B	8BBF	LDR &00		
45	00	01	FF	32	B	8BC1	STX &10		
45	00	01	FF	32	B	8BC3	LDR &0C		
45	07	01	FF	30	B	8BC5	STX &10		
45	07	01	FF	30	B	8BC7	STY &1B		

Five special features

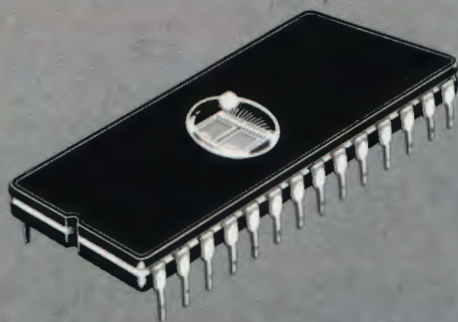
- * Dual screen facility allows you to switch between EXMON's control screen and your own screen.
- * Full screen memory editor.
- * Full debugging with breakpoints AND single-step facility.
- * EXMON II is fully interactive – all data and addresses can be entered as hex or decimal values, or as expressions including the use of Basic variable names and Assembler variables and labels.
- * RELOCATOR – relocates machine code adjusting it to run at the new address.

Upgrade

If you have EXMON I on eeprom and now wish to upgrade to EXMON II, please return it to us to receive 50% discount.

Exmon II features include

- * 60 machine code commands.
- * Full dual screen operation.
- * Full screen memory editor, input in hex Ascii or as assembler instructions.
- * Search for hex or Ascii string, including wildcards.
- * Move memory block.
- * Verify that two blocks are the same.
- * Relocate code to run at another location.
- * Fill memory with series of hex bytes or Ascii string.
- * Execute all * commands.
- * Show registers after Osbyte/Osword calls.
- * Single step with skip option.
- * Up to 10 breakpoints which may even be set in Rom.
- * Conditional breakpoint . . . e.g. Break if register X=5.
- * User definable work area.



```

05 0D EXMON II by Beebugsoft 12 CH
a X Y S P flags PC stack
00 00 00 FF 30 B 0000

8009 : 42 41 53 49 43 00 28 43 BASIC <C
8011 : 29 31 39 38 32 20 41 63 >1982 Ac
8019 : 6F 72 6E 0A 0D 00 00 80 orn...
8021 : 00 00 A9 84 20 F4 FF 86 )...
8029 : 06 04 07 A9 83 20 F4 FF )...
8031 : 84 18 02 00 86 1F 8E 02 "...>
8039 : 04 8E 03 04 CA 86 23 A2 "...J#"
8041 : 0A 8E 00 04 CA 8E 01 04 "...J"
8049 : A9 01 25 11 05 0D 05 0E ">%"
8051 : 05 0F 05 10 0D 0C A9 41 "...P >A
8059 : 85 0F A9 52 85 0E A9 57 "...R >W
8061 : 85 0F A9 02 8D 02 02 A9 "...>
8069 : 84 8D 03 02 58 4C DD 8A 4 "...XL+
8071 : 41 4E 44 80 00 41 42 53 AND ABS

7P 8000
755 8000+9000"BASIC"
Found at 8009

```

"Beebug's Exmon is an exceptionally comprehensive machine code monitor ... EXMON would be hard to improve upon. It manages to provide all the facilities you are likely to need in developing and testing machine code."

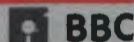
YOUR COMPUTER AUGUST 1983

"... offers a lot of very useful facilities. ... a very worthwhile product."

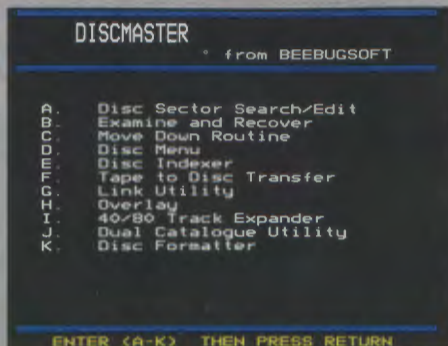
ELECTRONICS & COMPUTING MONTHLY MAY

1984

DISCMASTER Utilities for the disc user



Eleven powerful utilities to support the disc user, with routines to help with just about everything you'll want to do while using your disc drive. All programs are called from a main menu and are explained in detail in the comprehensive manual.



1) Disc editor/String search

A string search routine combined with a full screen editor, simply overtype on the screen (in hex or ascii) to update the disc.

2) Recover

Recovers programs lost by accidental deletion or disc corruption.

3) Movedown

The command *RUN will load, move down and run your long programs automatically, if you add this routine to them.

4) Disc menu

A colourful automatic menu to add to each of your discs, which will move down and RUN Basic programs, and *RUN machine code programs.

5) Indexer

Creates an information index file for all of your discs, which may then be displayed, updated or printed to help you keep track of your programs.

6) Copier

Transfer a whole cassette of programs onto disc automatically. (Will not copy protected cassettes).

7) Link

A utility to automatically call and insert useful routines from your own library into your development programs.

8) Overlay

Enables procedures or functions to be loaded from disc and overlaid into your program as it runs, allowing you to run programs much larger than available memory.

9) 40 to 80

Insert your 40 track disc, 3 minutes later remove the disc which is now in 80 track format and still has all of your programs on it.

10) Dual catalogue

Enables 61 files to be saved per disc surface instead of just 31.

11) Format

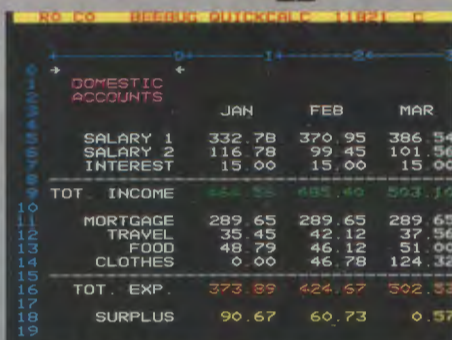
A speedy program to format or verify 40 and 80 track discs.

QUICKCALC An easy-to-use spreadsheet

QUICKCALC is an easy-to-use, extremely powerful spreadsheet supplied on cassette or disc. It will bring sophistication and computing power to a wide range of different number-based activities.

Use it for your personal accounts, school marks, stock control, sales, VAT, and general financial planning. It allows rapid and automatic calculation of all kinds, and permits forward planning and "what if" analyses to be effortlessly performed.

All data is stored on a large matrix which may be windowed across the screen in any direction. Machine code ensures fast movement around the screen.



The screenshot shows a spreadsheet window titled "DOMESTIC ACCOUNTS" with columns for JAN, FEB, and MAR. The rows list various financial items and their values.

	JAN	FEB	MAR
SALARY 1	332.78	370.95	386.54
SALARY 2	116.78	99.45	101.56
INTEREST	15.00	15.00	15.00
TOT. INCOME	464.56	485.40	503.10
MORTGAGE	289.65	289.65	289.65
TRAVEL	35.45	42.12	37.56
FOOD	48.79	46.12	51.00
CLOTHES	0.00	46.78	124.32
TOT. EXP.	373.89	424.67	502.53
SURPLUS	90.67	60.73	0.57

QUICKCALC offers load, save, print, goto, replicate, histogram and many other functions and is supplied with a comprehensive manual and function key strip.

BILLBOARD Scrolling display pack

BILLBOARD is a unique pack which enables you to use your BBC Micro to create scrolling displays of text and pictures in mode 2. It is ideal for home, education, business or anyone wishing to display information in an interesting and eye-catching way.

Your message is entered using a special screen editor and may be up to 4,000 characters long, in any of the 16 colours (including flashing). It can be displayed using special shadow

characters, in any of 18 different sizes.

The message will automatically re-display itself continuously, even if Break or Ctrl/Break is accidentally pressed.

A special facility allows you to link two BBC's via the RS423 ports and have your message and pictures scrolling across two machines providing a most impressive display.

The whole program is menu driven and allows text to be loaded and saved to disc for later use.



TOOLKIT Basic programmer's aid

 **Electron**  **BBC**

"TOOLKIT is an essential utility for all Basic programmers using the BBC Micro. . . . The range is enormous. . . . an indispensable aid packed full of powerful utilities."

EDUCATIONAL COMPUTING MARCH 1984

"... highly recommended."

PCN MARCH 17 1984

"The Beebugsoft Toolkit costs £27 and in my opinion is worth every penny. Since it has been installed in my BBC it has been used extensively and I can find no fault with it. Highly recommended to lazy programmers!"

COMPUTING TODAY JUNE 1984

- 27 new commands to make life easier
- Saves hours in program development and debugging
- Supports both cassette and disc systems
- No command name conflict with other Roms
- Ideal for expert and novice alike
- Fitting instructions and a 32 page manual supplied
- You'll wonder how you ever managed without it

SPECIAL FEATURES INCLUDE

SCREEN EDITOR An extremely powerful editor, allowing the use of cursor keys to list a program line-by-line in either direction and move to any part of a program to over-type or insert new code and corrections.

ERROR DETECTION Powerful facility to trap an error in a Basic program as it runs. It will then automatically enter the Screen Editor, display the line in error and position the cursor close to the statement at fault.

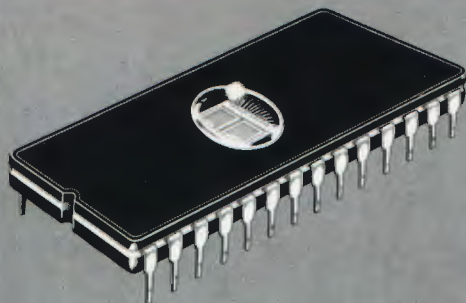
```
Editing lines 8 to 1490
String search
Search and replace
Move lines
List procedures and functions
List A% to Z%
List numeric variables
List string variables
List arrays
Change edit range
Edit program

ESCAPE to exit
Enter option: 1
Search string: X%
640 DEFPROCVAL(X%,Y%,Z%,N%,Y%)
670 IFB%=>N, A%UP*2:ENDPROC
1450 LOCAL N%,Y%
1460 Sbuf%=cmand$: N% =buf%:Y%=buf%DIV2
66
Enter option: _
```

```

>
>HELP INFO
TOOLKIT 1.30
FX 3 0
FX 5 1
FX 7 100
FX 9 25
FX 11 50
          FX 4 0
          FX 6 10
          FX 8 100
          FX 10 25
          FX 12 8
      B%=&0000090A
LISTD 0      WIDTH 0
ERR 26      ERL 0
REPORT: No such variable
Free memory = 20262 bytes
Program size= 5082 bytes
Next free location= &2CDA
PAGE= &1500  LINES= &20DA
TOP = &2CDA  HMEM= &7C00
OS 1.20
>

```



Rated highest in comparison with Addcomm, Caretaker, Toolstar and U-Tools.

ACORN USER OCTOBER 1984

"An excellent Basic programming aid with easy to use and easy to remember commands and good documentation."

MICRO USER OCTOBER 1984

COMMANDS

- *CHECK** Verify a program or data in memory with disc/cassette.
- *CLEAR** Clear all variables including integers.
- *EDIT** Enter full screen editor.
- *FREE** Display free memory and pseudo variables.
- *HELP INFO** Display a screenful of useful system information.
- *MEMORY** Display memory contents.
- *MERGE** Merge a program in memory with one on disc/cassette.
- *MOVE** Move program to run at specified address.
- *NEW** As NEW, but can be issued from within a program.
- *OFF** Cancel enhanced error handling.
- *OLD** As OLD, but can be issued from within a program.
- *ON** Auto error handling – enters editor at line in error.
- *PACK** Efficient program compactor.
- *RECOVER** Intelligently recover bad programs.
- *RENUMBER** Allow partial renumbering.
- *REPORT** Extended error reporting facility.
- *SCREEN** Screen dump to cassette or disc.
- *UTIL 1** String search.
- *UTIL 2** String search and replace.
- *UTIL 3** Move Basic program lines.
- *UTIL 4** List procedures and functions.
- *UTIL 5** List values of A% to Z%.
- *UTIL 6** List numeric variables.
- *UTIL 7** List string variables.
- *UTIL 8** List names of arrays.
- *UTIL 9** Set up range for utilities 1 and 2.

BEEBUGSOFT products may be obtained from major dealers including selected branches of W.H. Smiths, Technomatic of London and the following:

A.D. Video & Computer Centre, 30 High Street, WELLINGTON, Somerset, (082 347) 6687. **Aldode (Ind.) Co. Ltd.**, 201 Haverstock Hill, LONDON, NW3 4QG, 01 794 0991. **Algotek Computers Co. Ltd.**, Wood Street, WAKEFIELD, West Yorks, (0924) 369555. **Audio Marketing (UK) Ltd.**, 278 Abbeydale Road, WEMBLEY, Middlesex, HA0 1HE. **B & G Computer Electronics**, 248/250 Tottenham Court Road, LONDON, W1P 9AP, 01 636 6500. **Buffer Micro Shop Ltd.**, 310 Steatham High Road, LONDON, SW16 6HG, 01 769 2887. **3SL Computers**, Brook House, 513 Crewe Road, Wheelock, SANDBACH, Cheshire, CW11 0QX, (09367) 3842/61249. **Cambridge Electronic Design Ltd.**, Science Park, Milton Road, CAMBRIDGE, CB4 4BH, (0223) 316186. **Canterbury Software Centre**, 9 The Friars, CANTERBURY, Kent, CT1 2AS, (0227) 53531. **Cardigan Computer Electronics**, Clancy Lane, CARDIGAN, Dyfed, (0239) 614483. **Chalksoft Ltd.**, 37 Willowsvale Road, WORCESTER, WR3 7OP, (0905) 55192. **Club Computers**, 6 Evans Yard, BICESTER, Oxon, (0869) 248600. **Computerbase**, 21 Market Place, City Centre, PLYMOUTH, (0752) 672128. **Computer Plus**, 2 Church Lane, BANBURY, Oxon, OX16 8LR, (0295) 55890. **Computers of Wigmore Street**, 104 Wigmore Street, LONDON, W1H 9FA, 01 466 0373. **Computer World**, 208 Chorley Old Road, BOLTON, BL1 3BG, (0204) 494304. **Computer Village**, Suite 2/3 Hazledine House, Central Square, Telford Town Centre, TELFORD, TF3 4JL, (0952) 506771. **Control Universal Ltd.**, Unit 2, Andersons Court, Newnham Road, CAMBRIDGE, CB3 9E7, (0223) 358767/323403. **The Coventry Micro Centre**, 33 Far Gosford Street, COVENTRY, CU1 5DW, (0203) 58942. **Courtgrant Computers**, Arndale Centre, STRETFORD, Manchester, M32 9BB, (061) 864 2010. **D.A. Computers Ltd.**, 104 London Road, LEICESTER, LE2 1ND, (0533) 549407. **Darlington Computer Shop**, 75 Bondgate, DARLINGTON, DL3 7JT, (0325) 487478. **The Data Store (East Sussex)**, Victoria Road, HAILSHAM, East Sussex, BN27 2AY, (0323) 846777. **The Data Store Microcomputer's (Kent)**, 6 Chatterton Road, BROMLEY, Kent, BR2 9QN, 01 460 8991. **Dataleaf Ltd.**, 41-42 High Street, WELLINGBOROUGH, Northants, NN8 4HL, (0933) 228966. **Devon Computers**, The White House, 39 Totnes Road, PAIGNTON, Devon, (0803) 526303. **Dimension**, 27-29 High Street, LEICESTER, LE1 4FP, (0533) 57479. **Electronequip**, 36-38 West Street, FAREHAM, Hants. **Eltec Computers**, 217 Manningham Lane, BRADFORD, West Yorkshire, BD8 7HH, (0774) 722512. **Fal-Soft Computers**, 8 St. Georges Arcade, FALMOUTH, Cornwall, TR11 3DH, (0326) 314663. **Fosters**, 59 Temworth Street, LINCHFIELD, Staffs, (05432) 22341. **G.A. Computers Ltd.**, 20/22 High Street, RUDDINGTON, Nottingham, NG11 6EJ, (0602) 211225. **Gwent Computers**, 92 Chepstow Road, NEWPORT, Gwent, NPT 8EE, (0633) 841760. **Haslemere Computers**, 17 Lower Street, HASLEMERE, Surrey, (0428) 54428. **Highlands Computer Services Ltd.**, 2 Cowell Street, LLANELLI, Dyfed, (05542) 70517. **Lancashire Micros**, 89 Euston Road, MORECOMBE, Lancs, (0524) 411435. **Lansdowne Computer Services**, 1 Lansdowne Crescent, BOURNEMOUTH, (0202) 20165. **M.E. Electronics**, 5 Hatheryl, READING, Berkshire, RG1 5QA, (0734) 669480. **MBA Consultants**, Park House, 32 Chatsworth Road, CROYDON, Surrey, CR0 1HA, 01 681 8011. **Medway Computers Ltd.**, 141 New Road, CHATHAM, Kent, ME4 4PT, (0634) 826080/681547. **Michael Business Systems Ltd.**, 195 London Road, BUGGESS HILL, West Sussex, RH15 9RN, (04446) 41441. **Micro-Bridge**, 75 Goodramgate, YORK, (0904) 39449. **Micro Express**, Silicon House, Fowke Street, ROTHLEY, Leicestershire, LE7 7PJ, (0533) 375757. **Microman Computers**, Rainford Industrial Estate, Mill Lane, RAINFORD, St. Helens, WA11 8LS. **Micro Power**, Northwood House, North Street, LEEDS, LS7 2AA. **Mobile Micros**, 2 Castle Street, THORNURBY, Bristol, BS12 1HN, (0454) 418383. **Microserve**, 39 Oswald Road, SCUNTHORPE, South Humberside, DN15 7PN, (0724) 849696. **Microware**, Charles Street, HANLEY Stoke-on-Trent, ST1 3AR, (0782) 269 883. **Microway Computers Centre**, 39 High Street, RAINHAM, Kent, (0834) 376702. **Mirage Microcomputers Ltd.**, 24 Bank Street, BRAINTREE, Essex, CM7 7UL, (0376) 48321. **New Crown Computers Pty Ltd.**, 124 Dunstable Road, LUTON, Beds, (0582) 455684. **A.S. Peck Engineering**, 2 Mount Pleasant, SOUTH RUISLIP, Middlesex, HA4 9HF, 01 845 2803. **P.H. Electronics Ltd.**, 22/24 Gifford Road, BAGSHOT, Surrey, (0276) 73078. **Pyramid Micros**, Cairo Street, WARRINGTON, Cheshire, (0925) 35713. **Ramco**, 124 The Broadway, MILL HILL, London, NW7. **AA Sotheran Ltd.**, 14/16 Queens Street, REDCAR, Cleveland, TS10 1AF, (0642) 484057. **J.S. Simnett Computers**, Unit 14, St. Georges Industrial Estate, 380 Richmond Road, KINGSTON, Surrey, 01 541 1495. **Screen Microcomputers**, 6 Main Avenue, Moor Park, NORTHWOOD, Middlesex, (09274) 20664. **Snipe Computers**, Babbage House, 18 Whitefield Road, HANTS, PH25 6DF, (0425) 617477. **Soft Options**, 97 Old Road, HARLOW, Essex, (0279) 32953. **Softshop**, 55 St. Peters Court, CHALFONT ST. PETERS, Bucks, (0753) 889010. **South Bucks Computer Centre**, 120-123 Oxford Road, HIGH WYCOMBE, Bucks, HP11 2DU, (0494) 442311. **Sweetens Bookshop Ltd.**, 48 Fishergate, PRESTON, PR1 8AT, (0772) 52494. **Syntax Computers**, 76 Cornwall Street, PLYMOUTH, PL1 1NS, (0752) 28705. **Tamsin Electronics**, 32 Feltrim Avenue, EXETER, Devon, EX2 4RF. **Technomatic Ltd.**, 17 Burnley Road, LONDON, NW10 1ED, 01-208 1177. **Telford Electronics**, Inside Banners, Mall 4, Telford Town Centre, SHROPSHIRE, TF3 4DG, (0952) 504911. **Twiststar Computers**, 17 Regina Road, SOUTHALL, Middlesex, UB2 5PL, 01 574 5271. **Vixon Computer Systems**, 49 Grimby Road, CLEETHORPES, South Humberside, DN35 7AQ, (0472) 58561. **Yorkshire Microcomputers Ltd.**, 4 Valfay Bridge Parade, SCARBOROUGH, (0723) 352381.

W.H. Smiths Branches, 104-105 Princes Street, EDINBURGH, (031) 225 7005. 83-85 Queen Street, CARDIFF, CF1 4BE, (0222) 390088. 14-16 Listergate, NOTTINGHAM, (0602) 582919. 39 Broad Street, READING, Berks, (0734) 394252. 34-35 The Guildhall Shopping Centre, EXETER, (0392) 219533. 11-13 Thames Street, Kingston-on-Thames, 01 541 0546. 10-16 Church Street, LIVERPOOL, L1 3EG, (0511) 709 1435. 14 Newland Walk, The Grosvenor Centre, NORTHAMPTON, (0804) 21822. 38-40 Fargate, SHEFFIELD, South Yorks, (0742) 731176. 92-96 Broadmead, BRISTOL, BS1 3DW, (0272) 213420. 26-29 Lion Yard, BRISTOL, (0223) 311373. Store 5, Arndale Centre, MANCHESTER, (061) 831 7441. 73-75 New George Street, PLYMOUTH, (0752) 869973. 34 North End, Croydon, SURREY, 01 688 5211. 39 Gallowtree Gate, LEICESTER, (0533) 26252. 29 Union Street, BIRMINGHAM, (021) 643 6976. High Friars, Eidon Square, NEWCASTLE-UPON-TYNE, (0632) 610413. 21-23 The Broadway, EALING, W5, 01 567 1471. 132-136 Kensington High Street, LONDON, W8, 01 937 0236. 110 High Road, Woodgreen, LONDON, N22, 01 889 0111. 124 Holborn Circus, LONDON, EC1N, 01 242 0535. 36 Soana Square, LONDON, SW1W 9AP, 01 730 0351. Brent Cross Shopping Centre, Brent Cross, LONDON, NW4, 01 202 4226. 16 Kings Mall, Kings Street, North Side, Hammington, LONDON, W6, 01 748 2218/4277. 53 Argyle Street, GLASGOW, G2 8AH, (041) 221 6061. 32 The Broadway, BRADFORD, (0274) 729456. 13-17 Commercial Street, LEEDS, (0532) 453225. 10-20 The Prospect Centre, KINGSTON-ON-HULL, (0482) 226600.

Your local dealer:

BEEBUGSOFT Price List and Order Form

Product	Eprom Price	No Rqd.	5" Disc Price	No. Rqd.	Cass. Price	No. Rqd.	Total Price
UTILITIES							
Sleuth BBC	£29.00	—	—	—	—
Toolkit BBC	£27.00	—	—	—	—
Toolkit Electron	£27.00	—	—	—	—
Exmon II BBC	£29.00	—	—	£10.00
Exmon Electron	£27.00	—	—	£10.00
Help BBC	£25.00	—	—	—	—
Spellcheck (W.Wise) BBC	—	—	£19.00	—	—
Spellcheck (View) BBC	—	—	£19.00	—	—
Spellcheck II BBC	£31.00	—	—	—	—
Discmaster BBC	—	—	£19.00	—	—
Dumpmaster BBC	—	—	£12.00	£10.00
Teletext BBC	—	—	£12.00	£10.00
Sprites BBC	—	—	£12.00	£10.00
Sprites Electron	—	—	—	—	£10.00
APPLICATIONS							
Masterfile II BBC	—	—	£19.00	£10.00
Masterfile Electron	—	—	—	—	£10.00
Murom BBC	£29.00	—	—	—	—
Quickcalc BBC	—	—	£15.00	£13.00
Starter Pack BBC	—	—	£15.00	£13.00
Starter Pack Electron	—	—	—	—	£13.00
Hershey Font BBC	—	—	£15.00	£10.00
Vocab BBC	—	—	—	—	£10.00
Billboard BBC	—	—	£19.00	—	—
Design BBC	—	—	£19.00	£10.00
Paintbox II BBC	—	—	£12.00	£10.00
Paintbox II Electron	—	—	—	—	£10.00
Superplot BBC	—	—	—	—	£10.00
Superplot Electron	—	—	—	—	£10.00
Reference card BBC	—	—	—	—	£ 2.50

Name SUB TOTAL

Address POSTAGE


..... TOTAL ENCLOSED

Postage, please add 50p for the first item and 30p for each subsequent item. Overseas send the same amount, to include extra post but not VAT.

All products available from 15th Nov 84

To order directly from BEEBUGSOFT complete and send this form to:
BEEBUGSOFT, PO BOX 109, HIGH WYCOMBE, BUCKS, HP10 8HQ.

How to obtain BEEBUGSOFT products

All BEEBUGSOFT products are available from leading dealers including larger branches of **W.H. Smith** and **Technomatic Ltd.**, of London. 
See dealer list overleaf for your nearest dealer.

For mail order please use the order form overleaf, we are also able to accept Official Orders.

Credit Card Telephone Orders



Access or Barclaycard holders may order by telephone on our 24 hours service. Telephone PENN (049481) 6666.

Software Writers

We are always looking for new ideas and programs to add to the BEEBUGSOFT range. Our rates are generous, so if you have any suitable software please write to: The Software Manager, BEEBUGSOFT, P.O. Box 50, St. Albans, Herts.

Information for Dealers

Dealer enquiries: Please Telephone St. Albans (0727) 60263.

How to contact BEEBUGSOFT

If you require further information please write to: The Software Manager, BEEBUGSOFT, P.O. Box 50, St. Albans, Herts. or Telephone St. Albans (0727) 60263.

MASTERFILE II General purpose database

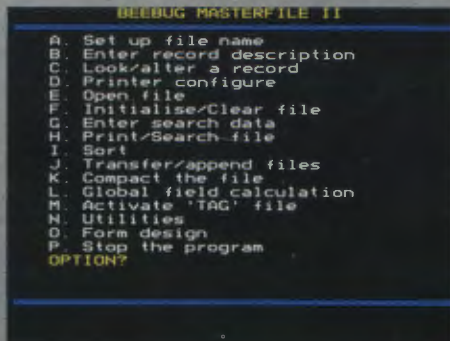
Electron  BBC

Now Combines With Wordwise/View To Produce Standard Letters etc.

MASTERFILE is a general purpose file management package allowing large amounts of information to be stored and processed. It is extremely powerful yet flexible and easy to use.

Once set up, the information may be retrieved, sorted on any field, displayed, updated, printed etc. as required.

Separate versions of the program are available for cassette and disc users, the disc version using random access files and offering many extra features.



MASTERFILE II is a new release of the very popular MASTERFILE disc program. It offers even more facilities and is completely compatible with the original version. See below for upgrade details.

MASTERFILE II Extra Facilities (Disc only)

New and vastly faster "tag" sorting on virtually any combination of fields.

Any number of tag files may be associated with your data file.

New and flexible print layouts. Using the new form design it is possible to print your information in just about whatever format you need it. Your own text may also be combined with the information on the database, allowing standard letters etc. to be produced.

Output from MASTERFILE II may be spooled directly to a file for later use with WORDWISE or VIEW.

More flexibility during record entry.

Fields may now be up to 255 characters long.

Extension of spreadsheet type facility allowing global changes to be made on string, numeric and decimal fields.

Field types may now also be date and decimal as well as string, integer and numeric.

Sub files can be created from selected fields and records, from the master file, according to most criteria.

Extra utilities to delete a field throughout a file, copy file descriptors and change dates.

Technical specification

The cassette version will allow up to 10 fields per record. Any number of files may be set up and each will typically hold 110 records (based on a 5 field record).

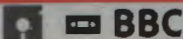
The disc version will allow up to 17 fields per record. File size is only limited by the disc capacity – typically using 5

fields 2000 records may be held on a 100K disc.

Upgrade

If you wish to trade in your disc MASTERFILE for the new MASTERFILE II, we will allow a discount of half the original price towards your new purchase.

DESIGN Computer aided design package



DESIGN is a screen processor which allows information to be displayed in a format suitable for demonstrations, slide projections, handouts or presentations.

Graphs, Pie Charts and Bar Charts are quickly produced on automatically drawn and scaled axes.

Text may be written anywhere on the screen and may be displayed normally, enlarged, underlined or sideways.

Twenty user-defined characters and four large macro characters are supplied, and may be placed anywhere on the screen or redefined as required. Additionally a set of

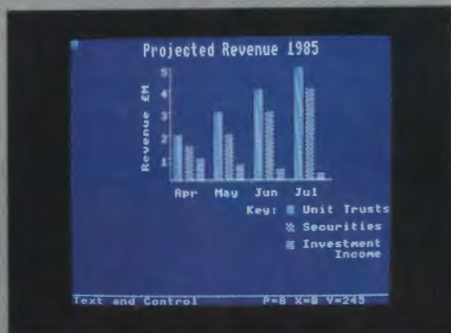
"A first rate screen processor ... immense value to schools and colleges ... ideal tool for preparing display material ..."

EDUCATIONAL COMPUTING APRIL 1984.

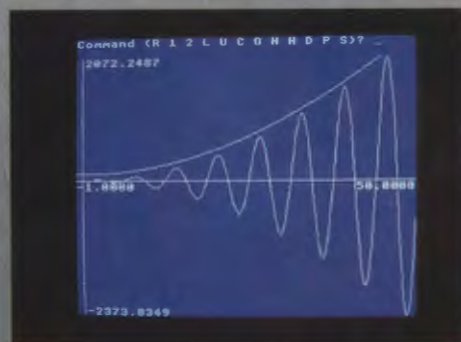
characters for circuit diagram generation is also included.

Machine code screen dumps are included for Epson, Seikosha, Shinwa and Star printers and details on how to load dumps for other printers are also included.

Screens may also be saved and reloaded to cassette or disc.



SUPERPLOT Graphics plotting package



SUPERPLOT is the ideal program for anyone interested in screen representations of mathematical functions.

It will plot on automatically scaled axes, in Cartesian, Polar or Parametric co-ordinate systems and will allow overlapping of graphs.

"This package is just the sort of software that brings mathematics to life ... makes learning great fun ..."

ELECTRONICS & COMPUTING APRIL 83

PAINTBOX II Sophisticated drawing package

Electron  BBC

Now controlled from Joysticks or Keyboard

PAINTBOX is probably the ultimate joystick drawing program for the BBC Micro. Use it to doodle or to design sophisticated full colour pictures.

As well as featuring an "elastic band" cursor, PAINTBOX will draw in full colour with various widths, and will automatically draw (and fill) circles, triangles etc., and create eight types of vertical or horizontal shading.

The keyboard may be used to insert text anywhere on the screen, using any colour and in any of eight sizes.

PAINTBOX II may be controlled from joysticks or keyboard and offers the following additional features:

- 10 user definable brushes
- Brush definer
- Use of keyboard characters as brushes
- New faster fill routine
- Redefinable movement keys
- Screen browser (disc only)



"An amazingly versatile tool... a sophisticated package that is easy to use... One of the most feature laden picture creating programs around... offers real value, tremendous potential. An inspiring package that adds yet another dimension to using a BBC Micro..."

EDUCATIONAL COMPUTING JAN 1984


"... very sophisticated and versatile utility."

"... will give an insight into some of the capabilities of CAD."

"... PAINTBOX is an excellent piece of software."

ELECTRONICS & COMPUTING MONTHLY
MAY 1984

SPRITES A game writer's utility pack

Electron  BBC

A game writer's utility pack which allows high speed arcade games to be written in Basic.

This is achieved by using the set of supplied machine code sprite routines to move multicoloured characters (sprites), of your own design, around the screen at high speed.

Control of the sprites' movements is by the user written Basic program. Specific commands to the sprites are very simple.

Sprites are generated in mode 2 on a 8x16 grid with the easy to use sprite definer utility, and may include any of the available 16 colours.

Up to seven sprites may be displayed and controlled on the screen at any one time. Each sprite may have up to two clones giving a total of 21 moving objects at once.

Special machine code routines are included to check for crashes between sprites. Other features include Super Sprites and automatic animation.

Electron Sprites

SPRITES are now available on the Electron, offering similar features to the BBC version except that mode 5 is used instead of mode 2.



"Definitely recommended."

"... (the programs) are excellent."

"... (should provide) a lot of exciting games prospects and opportunities."

ELECTRONICS & COMPUTING MONTHLY MAY 1984

(BEEBUGSOFT Sprite definer) "... head and shoulders above the others."

"For my money, Beebug's Sprite Utilities wins through for its ease of use in most applications."

Comparative review of "Sprite Gen" - DACC, "Sprite Master" - Soft Machine "Sprite Utilities" - Beebugsoft and "Sprites Version 2" - Simonsoft. ACORN USER MAY 1984.

TELETEXT PACK Teletext editor and tutor

"... Provides Teletext editing facilities in a well thought out manner ..."

ELECTRONICS & COMPUTING APRIL 1984
"A very neat utility ..."

MICRONET APRIL 1984

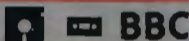
The **TELETEXT EDITOR** enables colourful mode 7 screens to be quickly created, for use within a program (e.g. an attractive title page) or just for display.

Powerful utilities, including a graphics character definer, speed up screen design and creation.

The function keys are used to select all colours or special features and a key strip is provided for ease of use.

Screens may be loaded or saved in the normal way, or specially saved as a Basic routine, which may then be simply inserted into your own program.

This pack is accompanied by an on-screen teletext tutor, which explains in a colourful way, how to make the most of mode 7.



SAMPLE SCREENS



VOCAB TESTER Five language learning aid

VOCAB TESTER is an extremely useful program for anyone learning a foreign language.

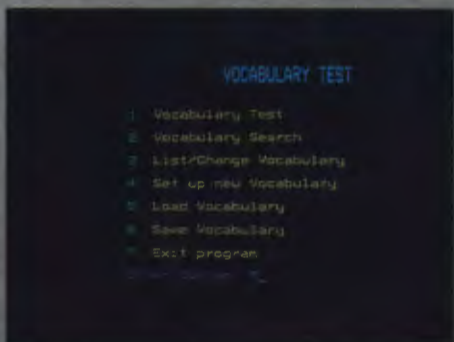
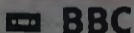
It is very easy to use, and is supplied with a starting vocabulary of 300 words in each of the following languages: French, German, Spanish, Italian and English.

Additionally any number of files may be created for each language.

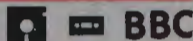
"... does its job efficiently with clear displays and sensible prompts.

... just the sort of facilities for learning this year's holiday vocabulary."

A&B COMPUTING MAY/JUNE 1984

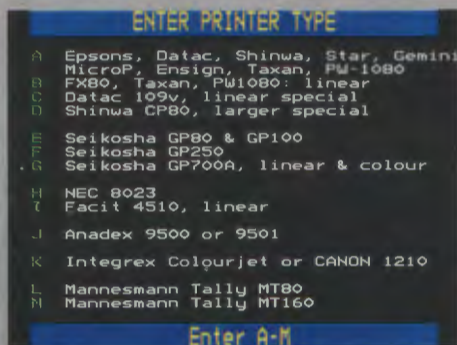


DUMPMASTER



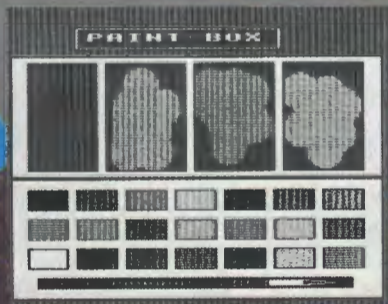
A clever piece of software which produces fast, machine code, tailor-made screen dumps for any of the ten different types of printers listed below. DUMPMASTER uses up to 8 shades and will accurately copy your screen in any of the graphics modes, and even the teletext mode.

Once created your tailor-made dump can be called as required or appended to your own Basic program. There is even a special 'Snapshot' facility which will produce screen dumps from a game or other program, at the press of a key. (As long as the program does not use the same work area.)




PRINTERS SUPPORTED

1. EPSON MX or FX, DATAC 109V, STAR 910 or SHINWA CT1 CP80.
2. EPSON FX series, special for linear prints, in addition to No. 1.
3. DATAC 109V, linear print, in addition to No. 1.
4. SEIKOSHA GP80A and GP100A.
5. SEIKOSHA GP250.
6. SEIKOSHA GP700, linear and in colour.
7. NEC PC 8023.
8. FACIT 4510, linear.
9. ANADEX DP-9500A and 9501A.
10. INTEGRIX COLOURJET 132, linear and in colour.



BEEBUG STARTER PACK

Electron  BBC

A First Rate Introduction to Your Computer

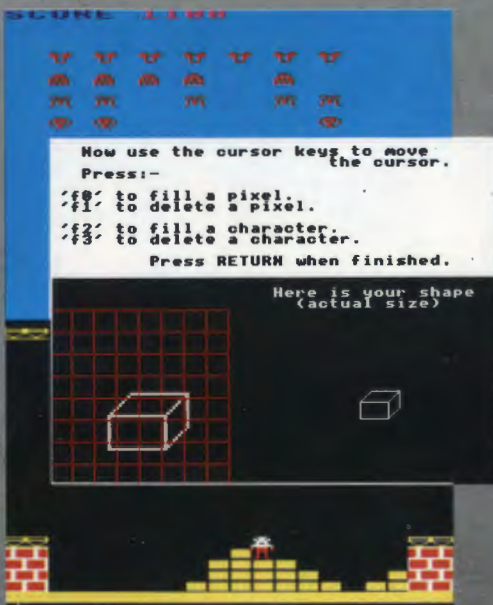
- A Comprehensive Manual
- 7 Explanatory Articles
- 25 Hints and Tips
- 5 Function Key Strips
- A Quick Reference Guide (BBC only)

This is the ideal companion for anyone new to computing or learning about the BBC Micro/Electron. The pack has been compiled by BEEBUG (the User Group for the BBC Micro) and draws on their experience with the machines and the feedback from over 25,000 members.

Separate packs are available for the Electron and the BBC Micro, and each includes a cassette or disc containing 5 handy utility programs. Also included are 7 games, chosen not only because they are fun to play, but also to highlight the speed, sound and graphics capabilities of your computer.

A comprehensive manual introduces you to various aspects of computing and how to program in a series of carefully explained articles. 25 of our most useful hints and tips are also detailed in the manual, which is accompanied by a number of handy function key strips and a 6 page quick reference card. (BBC only)

- Screen Planning Sheets
- A Character Planner
- A Cassette or Disc containing:
 - 5 Utility Programs and
 - 7 Games Programs



The articles include

- How a computer works
- Simple Basic programming
- Use of function keys
- Getting going with computer graphics
- An introduction to Teletext
- How to use sound and envelopes
- Reviews of useful books

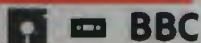
5 Utility programs

- Function key editor
- Multiple character definer
- Bad program recovery
- Utility search and replace editor
- Sound wizard

7 good games

- Starfire (BBC only)
- Block Blitz
- Galactic Invasion
- Space Lords (BBC only)
- Reversi
- Four In A Row
- Life
- Football Crazy (Electron only)
- Mars Lander (Electron only)

HERSHEY CHARACTERS Font generator

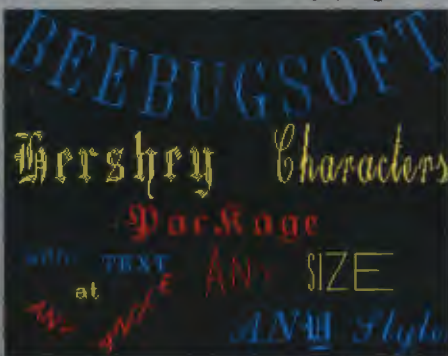


This is a comprehensive menu driven package which adds a new dimension to graphics displays on the BBC Micro.

Interesting characters from your own program

1500 new characters (made up of 9 different Hershey character fonts) are supplied ready to be used with your own program. Simply choose your characters, specify how you want to use them and this flexible utility spools out a routine for you to append to your own program.

Whole lines of text may then be automatically written at any angle, even with individual characters at different angles and sizes. Text may be any colour in any graphics mode, automatically centred and with fixed or variable spacing.



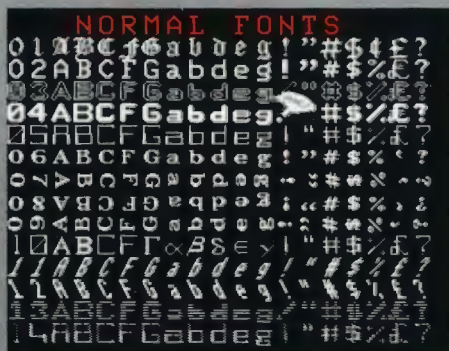
9 new character fonts

A second facility gives disc users a further set of 9 character fonts to be used direct from the keyboard or called up from a user program. A powerful and easy to use character definer allows any character to be redefined as required.

Whole new fonts may be created using the definer, which has facilities to invert, stripe and reflect any character being created.

Printer Dump

A screen dump for Epson printers is included with this pack, but you may easily use your own dumps for other printers.



BBC Micro Giant Reference Card

An 18 page reference card for the BBC micro. This easy-to-use guide is printed in four colours, and provides instant access to a vast array of information. Keep one of these beside your computer, and save hours of slogging through the User Guide, the Advanced User Guide and other reference works. All information is logically set out, with a general index covering the following areas:

Teletext graphics
Graphics modes
Plotting commands
Sound and Envelope data

Basic keywords
Keyboard Codes
Basic operators
Major Osvord and OS calls

DFS commands
Memory mapping
6502 op codes

HELP The Information Rom

BBC

Give your micro a mainframe utility

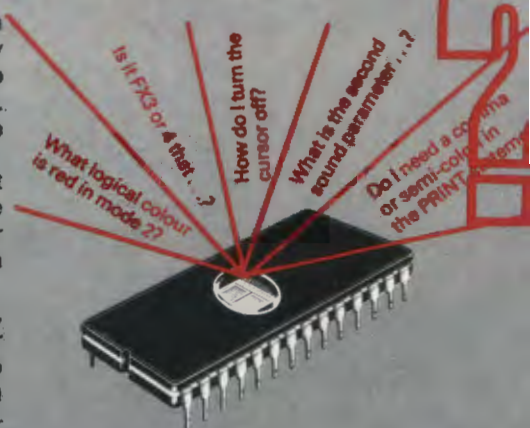
Most large mainframe computers have a comprehensive on-screen HELP facility to aid programming, save time and help you out when you get stuck. BEEBUGSOFT's new HELP Rom will give your micro a similar facility.

Just plug it in and every time you get stuck for a VDU code, a colour code, the parameters for a Basic command or whatever, the HELP Rom will provide an instant answer.

Rather than wade through a book, simply type, for example, *HLP VDU (or just *H VDU) to find out all you need to know about VDU commands – or if you know that it is VDU23 that you want – type *H VDU23.

The HELP Rom uses an ingenious compression technique enabling some 13,000 characters of text to be squashed into an 8K eeprom, and provides help on a vast range of subjects, including the following major areas:

BASIC KEYWORDS
SOUND
COLOUR
TELETEXT
VDU COMMANDS
FX CALLS



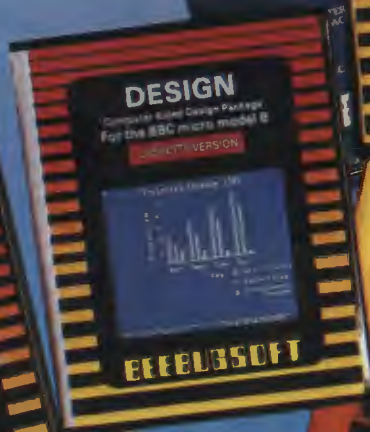
```
> *HLP VDU
VDU
Sends character to VDU queue
For specific help see *HLP VDU n
0 nothing
1 Help char to buffer sent
2 Enable printer
3 Disable printer
4 Separate outputs
5 Join outputs
6 Enable VDU devices
7 SWI
8 Cursor left
9 Cursor right
10 Cursor down
11 Cursor up
12 Clear text screen
13 Cursor to start of line
14 Paper mode on
15 Paper mode off
```

```
> *HLP FX 4
4 Enable/disable cursor editing
0 Enable cursor editing (default)
1 Disable cursor keys returning
ASCII codes 13B, 13C, 139
2 Disable cursor keys being soft
keys 11, 13
>
> *HLP MAGENTA
MAGENTA text #, mode 132
>
> *HLP VDU 19
19 Define logical colour
Defines the physical colour displayed
by a logical colour
VDU 19, 1, p, c, s, b
logical colour
physical colour (see *HLP 1)
```

HELP will not affect the normal *HELP command.

BEEBUG SOFT

*The Name to watch for
your serious B.B.C.
and Electron
Software*



Available from your local dealer and selected branches of W.H. SMITH'S. Telephone us for a full brochure . . .
St. Albans (0727) 60263.
BEEBUGSOFT, P.O. Box 50, St. Albans, Herts.