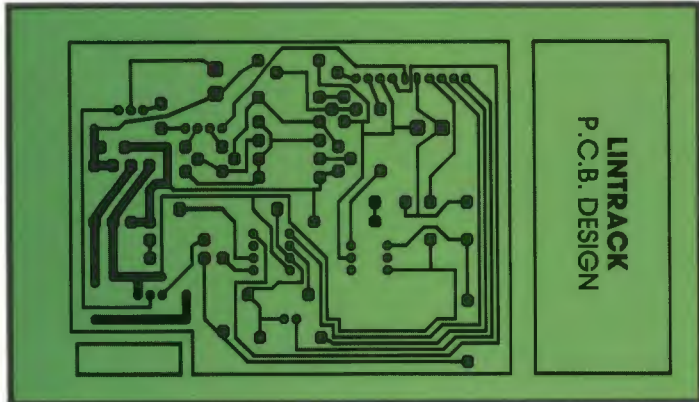




## INTERFACING

PLOTMATE A3M extends your system options. It has been designed to link to any micro that supports a Serial or Centronics Interface. Furthermore, the user may interchange graphics languages giving maximum interoperability between IBM, NIMBUS, AMSTRAD, BBC computers and commercially available software packages.

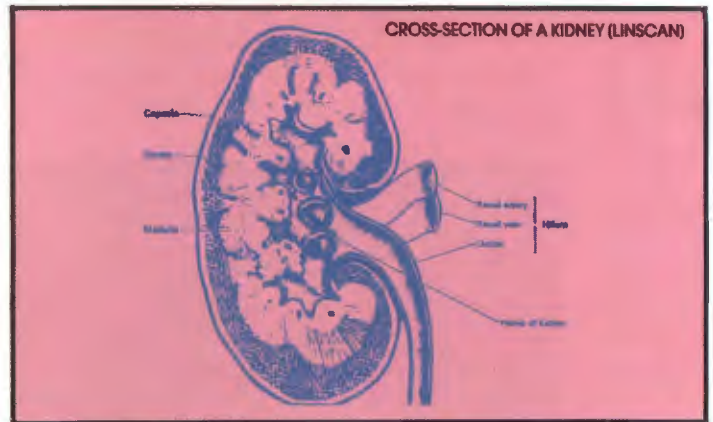
The direct drive port allows the use of interactive software packages such as **Linscan** and **Linmap** on BBC Micros.



## COMMUNICATION LANGUAGES

Select SWEET-P graphics language for compatibility with AutoCad, Supercalc and Lotus 123. Choose GRAPHTEC to run Bitstick and AutoCad. Unique to PLOTMATE — select the BBC Micro graphics commands to plot out BBC graphics programs in Basic, Logo or any high level language, without the need to write additional driver software.

Linear Graphics are continuously expanding their communication language options. A ROM supporting HPGL graphics commands is available to plug into the expansion socket of your PLOTMATE A3M.



## GRAPHICS ENHANCEMENTS

Not only can the number of graphics languages be extended, but the scope of their instructions can, by the addition of an expansion ROM, give access to high level commands such as sector and segment filling, rectangle and parallelogram shading, arc and circle drawing.

The user also has access to powerful functions such as windowing, bordering, automatic rescaling, re-originating and pen speed. These may be controlled either by the software or by direct keypad operation.

## APPLICATIONS

Use PLOTMATE A3M as a professional CAD tool, to digitize and scan data, to output camera ready artwork for PCB design purposes, to mathematically model functions and to display data in a variety of forms.

By using the BBC Micro as a Tektronix graphics terminal to your host mainframe computer, PLOTMATE A3M can produce high quality hard copy output from your BBC Micro terminal.

PLOTMATE A4M-desktop version of the A3M also available.

### PLOTMATE A3M SPECIFICATIONS

<b>SYSTEM:</b> Flatbed X-Y Stepper Motor Driven Plotter.
<b>PLOTTING AREA:</b> 270mm x 400mm.
<b>MAXIMUM PLOTTING SPEED:</b> 160mm/sec.
<b>PLOTTING MEDIA:</b> paper, card, OHT film, drafting film.
<b>PLOTTING PAPER SIZE:</b> ISO A3.
<b>PAPER FIXING:</b> Magnetic Strips.
<b>RESOLUTION:</b> 0.1016mm/0.004"
<b>REPEATABILITY:</b> ±0.1mm Absolute.
<b>KEYPAD:</b> 12 keys for direct pen control.
<b>DIP SWITCHES:</b> Option Switches enable selection of: INTERFACE Mode, Plotter LANGUAGE, BAUD RATE.
<b>LEDS:</b> 1 (On/Off line).
<b>CHARACTER SET:</b> The PLOTMATE Character Set includes a selection of GREEK, RUSSIAN, MATHEMATICAL and ANOTATION SYMBOLS . . . and allows the user to control: HEIGHT, WIDTH, ORIENTATION and SLANT.
<b>PEN TYPES:</b> Fibre Tip, Roller Ball, Plastic Tip, Overhead Transparency, Ceramic SRS, Rotring.
<b>POWER SUPPLY:</b> 240 Volts AC.
<b>POWER CONSUMPTION:</b> 50 Watts.
<b>DIMENSIONS:</b> 550mm Width, 380mm Depth, 160mm Height.
<b>WEIGHT:</b> 11 kg.
<b>STANDARD ACCESSORIES:</b> User Manual, Magnetic Strips, 2 Pens.
<b>OPTIONAL ACCESSORIES:</b> Ceramic Modular Pen Holder, Rotring Modular Pen Holder, Linscan (Optical Scanner), Dust Cover, Leads (Serial, Centronics, Direct Drive), Pens, Paper.

### INTERFACE SPECIFICATIONS

- CENTRONICS PARALLEL INTERFACE:**  
**INPUT SIGNAL:** Data + Strobe.  
**OUTPUT SIGNAL:** Busy.  
**I/O SIGNAL LEVEL:** TTL.  
 Connects to 36 way standard Centronics connector.
- RS232C SERIAL INTERFACE:**  
**BAUD RATE:** 110-4800.  
**DATA BITS:** 7 or 8 bit selectable.  
**CONNECTOR:** 25 way D-Type.
- DIRECT DRIVE.**  
 Stepper motors can be directly driven by the BBC Micro.

### FIRMWARE SPECIFICATIONS

- MULTIPLE GRAPHICS LANGUAGE EMULATION.**  
 BBC Plotting Commands.  
 Graphtec WX 4671 Emulator Commands.  
 Sweet-P Emulator Commands.
- 20 DIRECT KEYPAD CONTROL COMMANDS** include:  
 On/Off Line, Pen Up/Down, Pen Speed, Fast and Slow Cursor Key Control, Home, Park, Border, Re-Origin, Window, Self Test and Rescale.
- 16K ROM, 2K RAM.**
- EXPANDABLE TO 32K ROM, 4K RAM.**



PLOTMATE Graphics Plotters are British manufactured products and approved by ILEA.

LINEAR  
GRAPHICS

Linear Graphics Limited  
 28 Purdeys Way, Rochford,  
 Essex SS4 1NE  
 Telephone: 0702 541663/4/5  
 Telex: 995701  
 Bulletin Board: 0702 540356