

star 

- Exceptional Quality.
- Total Reliability.
- Excellent Performance.

STAR'S ECONA PRINTERS



SR-10/15



Easy access front panel with touch sensitive controls.



Dip switches are easily accessible.



Bottom paper feed saves space and keeps the paper tidy. (SD-15 and SG-15 only).

QUALITY AT SPEED

The Star SR range has set new standards in dot matrix printer design. From the 200cps draft print speed and 50cps Near Letter Quality output, to the automatic single sheet paper feed and integral rear mounted tractor, the SR printers give fast, convenient and versatile working.

With all the character options, ease of operation and PC compatibility, the SR range gives you a printer that is only matched by others at much greater expense.



200 CPS (NLQ 50 CPS)
DOT MATRIX PRINTER

SD-10/15 160 CPS (NLQ 40 CPS)
DOT MATRIX PRINTER

Star's 'S' series printhead epitomises the meaning of precision by using the latest advances in ceramic materials. This ensures a service life of over 100 million fast characters, not only on the SR but all Star printers.

For the demanding professional – the Star SR range.

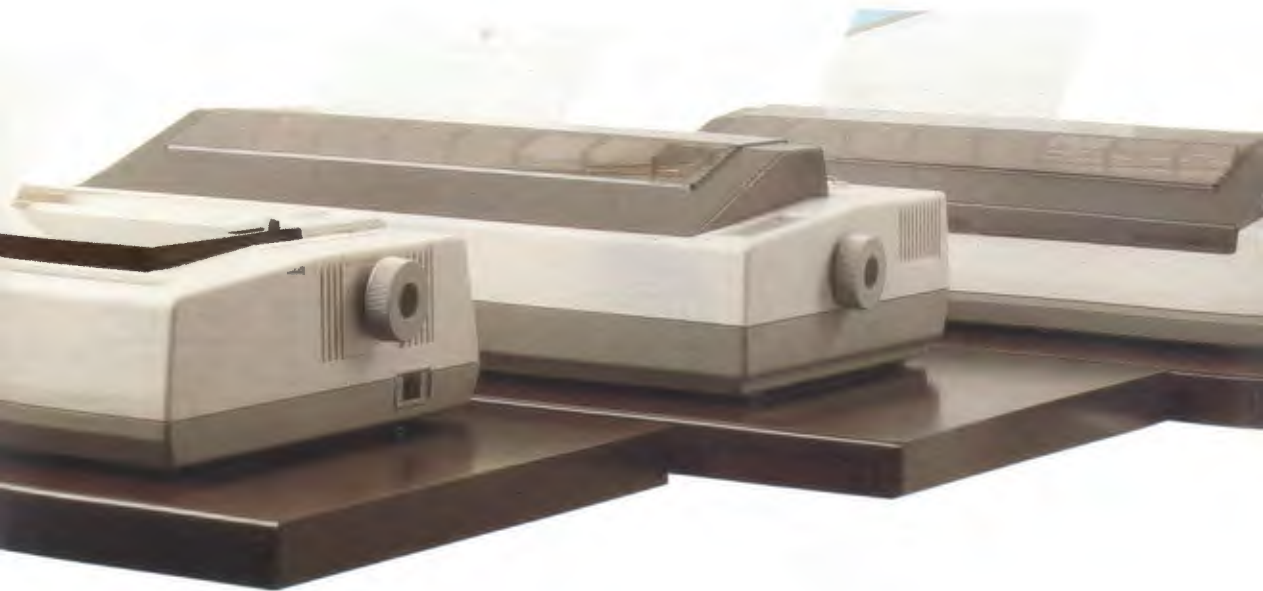
PEERLESS IN ITS CLASS

The SD continues the high standard set by Star. With the same care given to practical requirements. With the same

consideration that brings a total machine with no need to buy optional extras. The SD runs at a printspeed of 160cps whilst printing draft copy and at a crisp 40cps in Near Letter Quality. Touch sensitive control panel and easy access dip switches maintain the ease of use that is the hallmark of Star.

Changing interface from the standard parallel or adding optional boards of any kind is easy and convenient.

The larger the buffer, the sooner your computer is free to continue working. The SD-10 has a standard 2K buffer which you can expand to 6K. The SD-15 has a 16K buffer



SG-15 120 CPS (NLQ 30 CPS) DOT MATRIX PRINTER

while bottom paper feed means that it takes up very little space on your desk.

With full PC compatibility the SD range gives so much more for so little extra.

GREAT FEATURES – GREAT VALUE

Star makes printers using the most advanced production technique available. The concentrated experience of many years of micro-precision engineering has produced the SG-15 – probably the best value printer you can buy. Packed with features that are expensive options on any other printer in its class, the 120cps SG-15 with friction and tractor feed, 16K buffer and 30cps Near Letter Quality, has an outstanding record of reliability.

Designed to make the varied character options easy to use, all controls are swift and simple in operation. Dip switches are easily accessible on the outside of the machine and a bottom paper feed means that the wide carriage SG-15 takes up remarkably little desk space.

Naturally the SG-15 is fully PC compatible. If you have to be careful about your budget, spending less no longer means that you have to settle for less.



0/15 160 CPS (NLQ 40 CPS)
DOT MATRIX PRINTER



SPECIFICATIONS

	SR-10	SR-15	SD-10	SD-15	SG-15
Print Method	Serial Impact Dot Matrix	Serial Impact Dot Matrix	Serial Impact Dot Matrix	Serial Impact Dot Matrix	Serial Impact Dot Matrix
Print Head	9 Wires	9 Wires	9 Wires	9 Wires	9 Wires
Print Speed	200 cps, Bi-directional, Logic Seeking NLQ 50 cps	200 cps, Bi-directional, Logic Seeking NLQ 50 cps	160 cps, Bi-directional, Logic Seeking NLQ 40 cps	160 cps, Bi-directional, Logic Seeking NLQ 40 cps	120 cps, Bi-directional, Logic Seeking NLQ 30 cps
Paper Slew Speed	10 lps @ 1/8 in.	10 lps @ 1/8 in.	10 lps @ 1/8 in.	10 lps @ 1/8 in.	10 lps @ 1/8 in.
Print Buffer	2K Bytes (Expandable)	16K Bytes	2K Bytes (Expandable)	16K Bytes	16K Bytes
Number of Columns	80, 96, 136, (40, 48, 68 Double Width)	136, 163, 233 (68, 81, 116 Double Width)	80, 96, 136, (40, 48, 68 Double Width)	136, 163, 233 (68, 81, 116 Double Width)	136, 163, 233 (68, 81, 116 Double Width)
Character Matrix	Standard Characters: 9 dot x 11 dot · STAR Block Graphics: 6 dot x 6 dot · IBM Block Graphics: 12 dot x 11 dot · Near Letter Quality: 17 dot x 11 dot · Bit Image Modes: 8 dot x 60 dots/in. · 8 dot x 72 dots/in. · 8 dot x 80 dots/in. · 8 dot x 90 dots/in. · 8 dot x 120 dots/in. · 8 dot x 240 dots/in.				
Character Sets	96 Standard ASCII Characters · 88 Standard International Characters · 96 Italic Characters · 88 Italic International Characters · 96 NLQ Characters · 88 NLQ International Characters · 83 NLQ IBM Special Characters (Not SG-15) · 64 STAR Special Characters · 83 IBM Special Characters · 32 STAR Block Graphics Characters · 50 IBM Block Graphics Characters · 240 User-defined Characters				
Character Fonts	Normal (10 cpi) · Elite (12 cpi) · Condensed (17 cpi) · NLQ (10 cpi) · Enlarged (5, 6, 8.5 cpi) · Emphasized · Double Strike · Italics · Super and Sub Scripts				
Special Features	Automatic Single Sheet Insertion · Pause and Feed Buttons · Reverse Paper Feed · Short Form Tear-off Near Letter Quality Printing · Easy Access Format Switches · Self-test · Hex Dump · Downloadable Characters · Macro Instruction · Continuous Underlining · Ultra Hi Resolution Bit Image Graphics · Vertical and Horizontal Tabs · Skip Over Perforation · 15.5" Carriage (SR-15 SD-15/SG-15 only)				
Line Spacing	1/8, 1/8 in. or 7/32 in. Standard n/72, n/144 in. or n/216 in. Programmable				
Paper Handling	Single Sheet (5.5-8.5 in. Wide) Continuous Paper (4-10 in. Wide) Copies (3 Carbonless Sheets)	Single Sheet (5.5-14.5 in. Wide) Continuous Paper (4-15.5 in. Wide) Copies (3 Carbonless Sheets)	Single Sheet (5.5-8.5 in. Wide) Continuous Paper (4-10 in. Wide) Copies (3 Carbonless Sheets)	Single Sheet (5.5-14.5 in. Wide) Continuous Paper (4-15.5 in. Wide) Copies (3 Carbonless Sheets)	Single Sheet (5.5-14.5 in. Wide) Continuous Paper (4-15.5 in. Wide) Copies (3 Carbonless Sheets)
Ribbon	STAR Original Ribbon Cartridge	STAR Original Ribbon Cartridge	STAR Original Ribbon Cartridge	STAR Original Ribbon Cartridge	Standard 2 in. Two-Spool, Underwood
Interface	Standard Parallel (Centronics-compatible) Optional Serial RS-232C/20mA Current Loop (SG-15 RS-232 only)				
Dimensions (W x D x H)	414 x 345 x 117 mm (16.3 x 13.6 x 4.6 in.)	556 x 345 x 117 mm (21.9 x 13.6 x 4.6 in.)	392 x 357 x 154 mm (15.4 x 14.1 x 6.1 in.)	542 x 357 x 154 mm (21.3 x 14.1 x 6.1 in.)	542 x 315 x 145 mm (21.3 x 12.4 x 5.7 in.)
Weight	9.1 kg (20.1 lbs.)	11.1 kg (24.5 lbs.)	9.1 kg (20.1 lbs.)	11.1 kg (24.5 lbs.)	10 kg (22 lbs.)

IBM-PC is a registered trademark of International Business Machines Corp.
All product data subject to change without notice.



AKHTER INSTRUMENTS LTD. T/A

COMPUTER GROUP

AKHTER HOUSE, PERRY ROAD, STAPLE TYE,
HARLOW, ESSEX CM18 7PN, UK
Tel: HARLOW (0279) 443521. Telex: 818994 AKHTER G

star

Star Micronics U.K. Ltd.
Craven House, 40 Uxbridge Road,
London W5 2BS, England.
Telephone: 01-840 1800.
Telex: 948501 STAR UK.
Telefax: 01-579 2259.